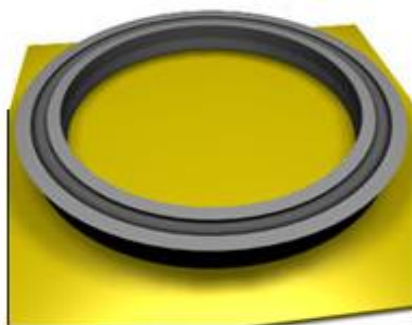


VF VEDAÇÃO E FIXAÇÃO LTDA.

GAXETA TIPO BAIXA EM POLIURETANO



Código	Int.	Ext.	Alt.
1250 0152	1/8"	3/8"	1/8"
1250 0250	1/4"	1/2"	1/8"
1870 0250	1/4"	5/8"	3/16"
2500 0250	1/4"	3/4"	1/4"
1250 0312	5/16"	9/16"	1/8"
1870 0312	5/16"	11/16"	3/16"
2500 0312	5/16"	13/16"	1/4"
1250 0375	3/8"	5/8"	1/8"
1870 0375	3/8"	3/4"	3/16"
1870 0375	3/8"	3/4"	3/16"
2500 0375	3/8"	7/8"	1/4"
3120 0375	3/8"	1"	5/16"
1250 0437	7/16"	11/16"	1/8"
1870 0437	7/16"	13/16"	3/16"
2500 0437	7/16"	15/16"	1/4"
3120 0437	7/16"	1,1/16"	5/16"
1250 0500	1/2"	3/4"	1/8"
1870 0500	1/2"	7,8"	3/16"
2500 0500	1/2"	1"	1/4"
3120 0500	1/2"	1,1/8"	5/16"
3750 0500	1/2"	1,1/4"	3/8"
1250 0562	9/16"	13/16"	1/8"
1870 0562	9/16"	15/16"	3/16"
2500 0562	9/16"	1,1/16"	1/4"
3120 0562	9/16"	1,3/16"	5/16"
3750 0562	9/16"	1,5/16"	3/8"
1250 0625	5/8"	7/8"	1/8"
1870 0625	5/8"	1"	3/16"
2500 0625	5/8"	1,1/8"	1/4"
3120 0625	5/8"	1,1/4"	5/16"
3750 0625	5/8"	1,3/8"	3/8"

Código	Int.	Ext.	Alt.
1250 0687	11/16"	15/16"	1/8"
1870 0687	11/16"	1,1/16"	3/16"
2500 0687	11/16"	1,3/16"	1/4"
3120 0687	11/16"	1,5/16"	5/16"
3750 0687	11/16"	1,7/16"	3/8"
1250 0750	3/4"	1"	1/8"
1870 0750	3/4"	1,1/8"	3/16"
2500 0750	3/4"	1,1/4"	1/4"
3120 0750	3/4"	1,3/8"	5/16"
3750 0750	3/4"	1,1/2"	3/8"
1250 0812	13/16"	1,1/16"	1/8"
1870 0812	13/16"	1,3/16"	3/16"
2500 0812	13/16"	1,5/16"	1/4"
3120 0812	13/16"	1,7/16"	5/16"
3750 0812	13/16"	1,9/16"	3/8"
1250 0875	7/8"	1,1/8"	1/8"
1870 0875	7/8"	1,1/4"	3/16"
2500 0875	7/8"	1,3/8"	1/4"
3120 0875	7/8"	1,1/2"	5/16"
3750 0875	7/8"	1,5/8"	3/8"
1250 0937	15/16"	1,3/16"	1/8"
1870 0937	15/16"	1,5/16"	3/16"
2500 0937	15/16"	1,7/16"	1/4"
3120 0937	15/16"	1,9/16"	5/16"
3750 0937	15/16"	1,11/16"	3/8"
1250 1000	1"	1,1/4"	1/8"
1870 1000	1"	1,3/8"	3/16"
2500 1000	1"	1,1/2"	1/4"
3120 1000	1"	1,5/8"	5/16"
3750 1000	1"	1,3/4"	3/8"
5000 1000	1"	2"	1/2"

GAXETA TIPO BAIXA EM POLIURETANO

Código	Int.	Ext.	Alt.
1250 1062	1,1/16"	1,5/16"	1/8"
1870 1062	1,1/16"	1,7/16"	3/16"
2500 1062	1,1/16"	1,9/16"	1/4"
3120 1062	1,1/16"	1,11/16"	5/16"
3750 1062	1,1/16"	1,13/16"	3/8"
1250 1125	1,1/8"	1,3/8"	1/8"
1870 1125	1,1/8"	1,1/2"	3/16"
2500 1125	1,1/8"	1,5/8"	1/4"
3120 1125	1,1/8"	1,3/4"	5/16"
3750 1125	1,1/8"	1,7/8"	3/8"
1250 1187	1,3/16"	1,7/16"	1/8"
1870 1187	1,3/16"	1,9/16"	3/16"
2500 1187	1,3/16"	1,11/16"	1/4"
3120 1187	1,3/16"	1,13/16"	5/16"
3750 1187	1,3/16"	1,15/16"	3/8"
5001 1187	11,3/16"	12,3/16"	1/2"
1250 1250	1,1/4"	1,1/2"	1/8"
1870 1250	1,1/4"	1,5/8"	3/16"
2500 1250	1,1/4"	1,3/4"	1/4"
3120 1250	1,1/4"	1,7/8"	5/16"
3750 1250	1,1/4"	2"	3/8"
5000 1250	1,1/4"	2,1/4"	1/2"
6250 1250	1,1/4"	2,1/2"	5/8"
1250 1312	1,5/16"	1,9/16"	1/8"
1870 1312	1,5/16"	1,11/16"	3/16"
2500 1312	1,5/16"	1,13/16"	1/4"
3120 1312	1,5/16"	1,15/16"	5/16"
3750 1312	1,5/16"	2,1/16"	3/8"
1250 1375	1,3/8"	1,5/8"	1/8"
1870 1375	1,3/8"	1,3/4"	3/16"
2500 1375	1,3/8"	1,7/8"	1/4"
3120 1375	1,3/8"	2"	5/16"
3750 1375	1,3/8"	2,1/8"	3/8"
5000 1375	1,3/8"	2,3/8"	1/2"
6250 1375	1,3/8"	2,5/8"	5/8"
1250 1437	1,7/16"	1,11/16"	1/8"
1870 1437	1,7/16"	1,13/16"	3/16"
2500 1437	1,7/16"	1,15/16"	1/4"
3120 1437	1,7/16"	2,1/16"	5/16"
3750 1437	1,7/16"	2,3/16"	3/8"
1250 1500	1,1/2"	1,3/4"	1/8"
1870 1500	1,1/2"	1,7/8"	3/16"
2500 1500	1,1/2"	2"	1/4"

Código	Int.	Ext.	Alt.
3120 1500	1,1/2"	2,1/8"	5/16"
3750 1500	1,1/2"	2,1/4"	3/8"
5000 1500	1,1/2"	2,1/2"	1/2"
6250 1500	1,1/2"	2,3/4"	5/8"
1870 1625	1,5/8"	2"	3/16"
2500 1625	1,5/8"	2,1/18"	1/4"
3120 1625	1,5/8"	2,1/4"	5/16"
3750 1625	1,5/8"	2,3/8"	3/8"
1870 1750	1,3/4"	2,1/8"	3/16"
2500 1750	1,3/4"	2,1/4"	1/4"
3120 1750	1,3/4"	2,3/8"	5/16"
3750 1750	1,3/4"	2,1/2"	3/8"
5000 1750	1,3/4"	2,3/4"	1/2"
6250 1750	1,3/4"	3"	5/8"
1870 1875	1,7/8"	2,1/4"	3/16"
2500 1875	1,7/8"	2,3/8"	1/4"
3120 1875	1,7/8"	2,1/2"	5/16"
3750 1875	1,7/8"	2,5/8"	3/8"
1870 2000	2"	2,3/8"	3/16"
2500 2000	2"	2,1/2"	1/4"
3120 2000	2"	2,5/8"	5/16"
3750 2000	2"	2,3/4"	3/8"
5000 2000	2"	3"	1/2"
6250 2000	2"	3,1/4"	5/8"
1870 2125	2,1/8"	2,1/2"	3/16"
2500 2125	2,1/8"	2,5/8"	1/4"
3120 2125	2,1/8"	2,3/4"	5/16"
3750 2125	2,1/8"	2,7/8"	3/8"
1870 2250	2,1/4"	2,5/8"	3/16"
2500 2250	2,1/4"	2,3/4"	1/4"
3120 2250	2,1/4"	2,7/8"	5/16"
3750 2250	2,1/4"	3"	3/8"
5000 2250	2,1/4"	3,1/4"	1/2"
6250 2250	2,1/4"	3,1/2"	5/8"
1870 2375	2,3/8"	2,3/4"	3/16"
2500 2375	2,3/8"	2,7/8"	1/4"
3120 2375	2,3/8"	3"	5/16"
3750 2375	2,3/8"	3,1/8"	3/8"
1870 2500	2,1/2"	2,7/8"	3/16"
2500 2500	2,1/2"	3"	1/4"
3120 2500	2,1/2"	3,1/8"	5/16"
3750 2500	2,1/2"	3,1/4"	3/8"
5000 2500	2,1/2"	3,1/2"	1/2"

GAXETA TIPO BAIXA EM POLIURETANO

Código	Int.	Ext.	Alt.
6250 2500	2,1/2"	3,3/4"	5/8"
1870 2625	2,5/8"	3"	3/16"
2500 2625	2,5/8"	3,1/8"	1/4"
3120 2625	2,5/8"	3,1/4"	5/16"
3750 2625	2,5/8"	3,3/8"	3/8"
1870 2750	2,3/4"	3,1/8"	3/16"
2500 2750	2,3/4"	3,1/4"	1/4"
3120 2750	2,3/4"	3,3/8"	5/16"
3750 2750	2,3/4"	3,1/2"	3/8"
5000 2750	2,3/4"	3,3/4"	1/2"
6250 2750	2,3/4"	4"	5/8"
1870 2875	2,7/8"	3,1/4"	3/16"
2500 2875	2,7/8"	3,3/8"	1/4"
3120 2875	2,7/8"	3,1/2"	5/16"
3750 2875	2,7/8"	3,5/8"	3/8"
1870 3000	3"	3,3/8"	3/16"
2500 3000	3"	3,1/2"	1/4"
3120 3000	3"	3,5/8"	5/16"
3750 3000	3"	3,3/4"	3/8"
5000 3000	3"	4"	1/2"
6250 3000	3"	4,1/4"	5/8"
7500 3000	3"	4,1/2"	3/4"
1870 3125	3,1/8"	3,1/2"	3/16"
2500 3125	3,1/8"	3,5/8"	1/4"
3120 3125	3,1/8"	3,3/4"	5/16"
3750 3125	3,1/8"	3,7/8"	3/8"
3120 3187	3,3/16"	3,3/4"	5/16"
3750 3187	3,1/4"	3,15/16"	5/16"
1870 3250	3,1/4"	3,5/8"	3/16"
2500 3250	3,1/4"	3,3/4"	1/4"
3120 3250	3,1/4"	3,7/8"	5/16"
3750 3250	3,1/4"	4"	3/8"
5000 3250	3,1/4"	4,1/4"	1/2"
6250 3250	3,1/4"	4,1/2"	5/8"
7500 3250	3,1/4"	4,3/4"	3/4"
1870 3375	3,3/8"	3,3/4"	3/16"
2500 3375	3,3/8"	3,7/8"	1/4"
3120 3375	3,3/8"	4"	5/16"
3750 3375	3,3/8"	4,1/8"	3/8"
5000 3375	3,3/8"	4,3/8"	1/2"
1870 3500	3,1/2"	3,7/8"	3/16"
2500 3500	3,1/2"	4"	1/4"
3120 3500	3,1/2"	4,1/8"	5/16"
3750 3500	3,1/2"	4,1/4"	3/8"

Código	Int.	Ext.	Alt.
5000 3500	3,1/2"	4,1/2"	1/2"
6250 3500	3,1/2"	4,3/4"	5/8"
7500 3500	3,1/2"	5"	3/4"
1870 3625	3,5/8"	4"	3/16"
2500 3725	3,5/8"	4,1/8"	1/4"
3120 3625	3,5/8"	4,1/4"	5/16"
3750 3625	3,5/8"	4,3/8"	3/8"
1870 3750	3,3/4"	4,1/8"	3/16"
2500 3750	3,3/4"	4,1/4"	1/4"
3120 3750	3,3/4"	4,3/8"	5/16"
3750 3750	3,3/4"	4,1/2"	3/8"
5000 3750	3,3/4"	4,3/4"	1/2"
6250 3750	3,3/4"	5"	5/8"
7500 3750	3,3/4"	5,1/4"	3/4"
1870 3875	3,7/8"	4,1/4"	3/16"
2500 3875	3,7/8"	4,3/8"	1/4"
3120 3875	3,7/8"	4,1/2"	5/16"
3750 3875	3,7/8"	4,5/8"	3/8"
1870 4000	4"	4,3/8"	3/16"
2500 4000	4"	4,1/2"	1/4"
3120 4000	4"	4,5/8"	5/16"
3750 4000	4"	4,3/4"	3/8"
5000 4000	4"	5"	1/2"
6250 4000	4"	5,1/2"	3/4"
7500 4000	4"	5,1/4"	5/8"
10000 4000	4"	6"	1"
1870 4125	4,1/8"	4,1/2"	3/16"
2500 4125	4,1/8"	4,5/8"	1/4"
3120 4125	4,1/8"	4,3/4"	5/16"
3750 4125	4,1/8"	4,7/8"	3/8"
1870 4250	4,1/4"	4,5/8"	3/16"
2500 4250	4,1/4"	4,3/4"	1/4"
3120 4250	4,1/4"	4,7/8"	5/16"
3750 4250	4,1/4"	5"	3/8"
5000 4250	4,1/4"	5,1/4"	1/2"
6250 4250	4,1/4"	5,1/2"	5/8"
1870 4375	4,3/8"	4,3/4"	3/16"
2500 4375	4,3/8"	4,7/8"	1/4"
3120 4375	4,3/8"	5"	5/16"
3750 4375	4,3/8"	5,1/8"	3/8"
1870 4500	4,1/2"	4,7/8"	3/16"
2500 4500	4,1/2"	5"	1/4"
3120 4500	4,1/2"	5,1/8"	5/16"
3750 4500	4,1/2"	5,1/4"	3/8"

GAXETA TIPO BAIXA EM POLIURETANO

Código	Int.	Ext.	Alt.
5000 4500	4,1/2"	5,1/2"	1/2"
6250 4500	4,1/2"	5,3/4"	5/8"
7500 4500	4,1/2"	6"	3/4"
2500 4625	4,5/8"	5,1/8"	1/4"
3120 4625	4,5/8"	5,1/4"	5/16"
3750 4625	4,5/8"	5,3/8"	3/8"
2500 4750	4,3/4"	5,1/4"	1/4"
3120 4750	4,3/4"	5,3/8"	5/16"
3750 4750	4,3/4"	5,1/2"	3/8"
5000 4750	4,3/4"	5,3/4"	1/2"
6250 4500	4,3/4"	6"	5/8"
7500 4750	4,3/4"	6,1/4"	3/4"
2500 4875	4,7/8"	5,3/8"	1/4"
3120 4875	4,7/8"	5,1/2"	5/16"
3750 4875	4,7/8"	5,5/8"	3/8"
2500 5000	5"	5,1/2"	1/4"
3120 5000	5"	5,5/8"	5/16"
3750 5000	5"	5,3/4"	3/8"
5000 5000	5"	6"	1/2"
6250 5000	5"	6,1/4"	5/8"
7500 5000	5"	6,1/2"	3/4"
2500 5125	5,1/8"	5,5/8"	1/4"
3120 5125	5,1/8"	5,3/4"	5/16"
3750 5125	5,1/8"	5,7/8"	3/8"
2500 5250	5,1/4"	5,3/4"	1/4"
3120 5250	5,1/4"	5,7/8"	5/16"
3750 5250	5,1/4"	6"	3/8"
5000 5250	5,1/4"	6,1/4"	1/2"
6250 5250	5,1/4"	6,1/2"	5/8"
7500 5250	5,1/4"	6,3/4"	3/4"
2500 5375	5,3/8"	5,7/8"	1/4"
3120 5375	5,3/8"	6"	5/16"
3750 5375	5,3/8"	6,1/8"	5/16"
2500 5500	5,1/2"	6"	1/4"
3120 5500	5,1/2"	6,1/8"	5/16"
3750 5500	5,1/2"	6,1/4"	3/8"
5000 5500	5,1/2"	6,1/2"	1/2"
6250 5500	5,1/2"	6,3/4"	5/8"
7500 5500	5,1/2"	7"	3/4"
2500 5625	5,5/8"	6,1/8"	1/4"
3120 5625	5,5/8"	6,1/4"	5/16"
3750 5625	5,5/8"	6,3/8"	3/8"
2500 5750	5,3/4"	6,1/4"	1/4"
3120 5750	5,3/4"	6,3/8"	5/16"

Código	Int.	Ext.	Alt.
3750 5750	5,3/4"	6,1/2"	3/8"
5000 5750	5,3/4"	6,3/4"	1/2"
6250 5750	5,3/4"	7"	5/8"
7500 5750	5,3/4"	7,1/4"	3/4"
2500 5875	5,7/8"	6,3/8"	1/4"
3120 5875	5,7/8"	8,1/2"	5/16"
3750 5875	5,7/8"	6,5/8"	3/8"
2500 6000	6"	6,1/2"	1/4"
3120 8000	6"	6,5/8"	5/16"
3750 6000	6"	6,3/4"	3/8"
5000 6000	6"	7"	1/2"
6250 6000	6"	7,1/4"	5/8"
7500 6000	6"	7"	3/4"
2500 6250	6,1/4"	6,3/4"	1/4"
3120 6250	6,1/4"	6,7/8"	5/16"
3750 6250	6,1/4"	7"	3/8"
5000 6250	6,1/4"	7,1/4"	1/2"
6250 6250	6,1/4"	7,1/2"	5/8"
7500 6250	6,1/4"	7,3/4"	3/4"
2500 6500	6,1/2"	7"	1/4"
3120 6500	6,1/2"	7,1/8"	5/16"
3750 6500	6,1/2"	7,1/4"	3/8"
5000 6500	6,1/2"	7,1/2"	1/2"
6250 6500	6,1/2"	7,3/4"	5/8"
7500 6500	6,1/2"	8"	3/4"
2500 6750	6,3/4"	7,1/4"	1/4"
3120 6750	6,3/4"	7,3/8"	5/16"
3750 6750	6,3/4"	7,1/2"	3/8"
5000 6750	6,3/4"	7,3/4"	1/2"
6250 6750	6,3/4"	8"	5/8"
7500 6750	6,3/4"	8,1/4"	3/4"
2500 7000	7"	7,1/2"	1/4"
3120 7000	7"	7,5/8"	5/16"
3750 7000	7"	7,3/4"	3/8"
5000 7000	7"	8"	1/2"
5000 7000 U	7"	8"	1/2"
6250 7000	7"	8,1/4"	5/8"
6250 7000	7"	8,1/4"	5/8"
7500 7000	7"	8,1/2"	3/4"
2500 7250	7,1/4"	7,3/4"	1/4"
3120 7250	7,1/4"	7,7/8"	5/16"
3750 7250	7,1/4"	8"	3/8"
5000 7250	7,1/4"	8,1/4"	1/2"
6250 7250	7,1/4"	8,1/2"	5/8"

GAXETA TIPO BAIXA EM POLIURETANO

Código	Int.	Ext.	Alt.
7500 7250	7,1/4"	8,3/4"	3/4"
2500 7500	7,1/2"	8"	1/4"
3120 7500	7,1/2"	8,1/2"	5/16"
3750 7500	7,1/2"	8,1/4"	3/8"
5000 7500	7,1/2"	8,1/2"	1/2"
6250 7500	7,1/2"	8,3/4"	5/8"
7500 7500	7,1/2"	9"	3/4"
2500 7750	7,3/4"	8,1/4"	1/4"
3120 7750	7,3/4"	8,3/8"	5/16"
3750 7750	7,3/4"	8,1/2"	3/8"
5000 7750	7,3/4"	8,3/4"	1/2"
6250 7750	7,3/4"	9"	5/8"
7500 7750	7,3/4"	9,1/4"	3/4"
2500 8000	8"	8,1/2"	1/4"
3120 8000	8"	8,5/8"	5/16"
3750 8000	8"	8,3/4"	3/8"
5000 8000	8"	9"	1/2"
6250 8000	8"	9,1/4"	5/8"
7500 8000	8"	9,1/2"	3/4"
2500 8250	8,1/4"	8,3/4"	1/4"
3120 8250	8,1/4"	8,7/8"	5/16"
3750 8250	8,1/4"	9"	3/8"
5000 8250	8,1/4"	9,1/4"	1/2"
6250 8250	8,1/4"	9,1/2"	5/8"
2500 8500	8,1/2"	9"	1/4"
3120 8500	8,1/2"	9,1/8"	5/16"
3750 8500	8,1/2"	9,1/4"	3/8"
5000 8500	8,1/2"	9,1/2"	1/2"
6250 8500	8,1/2"	9,3/4"	5/8"
2500 8750	8,3/4"	9,1/4"	1/4"
3120 8750	8,3/4"	9,3/8"	5/16"
3750 8750	8,3/4"	9,1/2"	3/8"
5000 8750	8,3/4"	9,3/4"	1/2"
6250 8750	8,3/4"	10"	5/8"
2500 9000	9"	9,1/2"	1/4"
3120 9000	9"	9,5/8"	5/16"
3750 9000	9"	9,3/4"	3/8"
5000 9000	9"	10"	1/2"
6250 9000	9"	10,1/4"	5/8"
2500 9250	9,1/4"	9,3/4"	1/4"
3120 9250	9,1/4"	9,7/8"	5/16"
3750 9250	9,1/4"	10"	3/8"
5000 9250	9,1/4"	10,1/4"	1/2"
6250 9250	9,1/4"	10,1/2"	5/8"

Código	Int.	Ext.	Alt.
2500 9500	9,1/2"	10"	1/4"
3120 9500	9,1/2"	10,1/8"	5/16"
3750 9500	9,1/2"	10,1/4"	3/8"
5000 9500	9,1/2"	10,1/2"	1/2"
6250 9500	9,1/2"	10,3/4"	5/8"
5001 0000	10"	11"	1/2"
5001 1000	11"	12"	1/2"
5001 1187	11,3/16"	12,3/16"	1/2"